

One Kitchen,
Two Budgets p.44

KITCHEN + BATH IDEAS

Your Style, Your Way

58 Tips for a
Better Design



FALL 2013
Display until December 2

\$6.99 U.S.



BHG.com/KitchenBath

PRICE GUIDE:
How Much Does
A New Kitchen
Really Cost? p.50

Make a Small Bath Feel Bigger p.42

BHG SIP Green Checkout

in the mix

Find the perfect blend of bold patterns, bright colors, and touchable textures inspired by the global marketplace.

writer KRISTINA MCGUIRK producer JOHN LOECKE photographer JAY WILDE



6

7

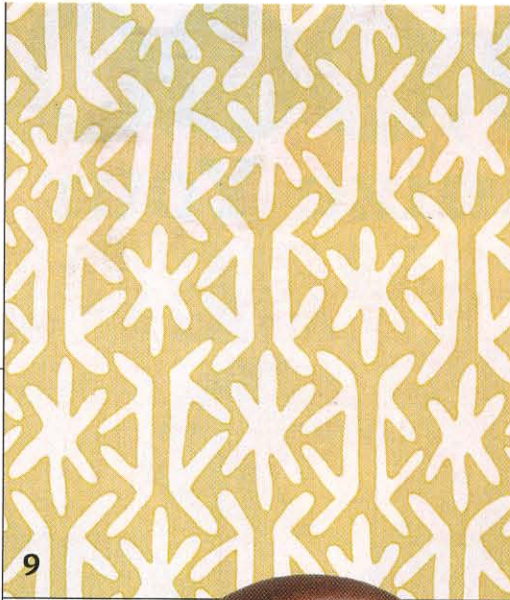


9

10



8



“Bring some flair into your home with fixtures, fittings, and furnishings that have a touch of ethnic élan.”

John Loecke
designer

6. MOCK ROCKS Get a grip on your kitchen design with these rock-inspired knobs. Distressed knobs in Antique Bronze, Oil Rubbed Bronze, and Champagne, \$12 each, Atlas, 800/799-6755, atlashardware.com. **7. HOT COOKIN'** This gas range embodies classic Italian heritage: quality engineering and love of food. Professional Series range in Arancio, \$3,999, Bertazzoni, 866/905-0010, us.bertazzoni.com. **8. CASUAL SEATING** Engineered to withstand weathering and the outdoors, this honey-and-white-color seating has natural texture and color, and it's easy to clean, too. Darwin dining chair, \$399, Crate and Barrel, 800/967-6696, crateandbarrel.com. **9. CHEERY COVER** A simple mix of pattern and color will pack a punch on powder room walls. Rinca wallpaper in green, \$54 per roll, Thibaut, 800/223-0704, thibautdesign.com. **10. DESERT RAIN** Detailed lever handles have a mechanical look reminiscent of a well pump. Ashfield center-set bath faucet in Rustic Bronze, \$352, Pfister, 800/441-5713, pfisterfaucets.com.

hot lighting trends

Make a statement with standout fixtures inspired by the trends we're seeing (and loving!) in design.

VINTAGE: From reusing antiques to made-new-but-looks-old milk-glass, hand-painted, and retro-vibe fixtures, the flair of vintage lighting is popping up all over, especially to complement more modern kitchen designs.

LANTERN: First common in entries, this style is now finding a home in kitchens. Whether they feature traditional lines or elegant arcs, oversize lantern pendants are often found hanging over islands.

INDUSTRIAL: Think empty warehouse. We're seeing lots of metal, exposed bulbs, and large, simple, factory-looking lighting.

SPHERE: Found in modern-looking chandeliers with groupings of orbs or large singular pendants, spheres made of various materials contrast with the sharp lines of cabinetry and appliances.

RUSTIC: Inspired by country style and the great outdoors, these fixtures use cages, ropes, unfinished wood, and even antlers for textural effects.

Harding fixture with glass shade, Schoolhouse Electric, schoolhouseelectric.com



ADVERTISEMENT

Enlightening Ideas for a Historic Home

PART 1: FINDING THE PERFECT MATCH

Built in the 1850's, this historic home in Mount Pleasant, SC has been a labor of love. Since the homeowners purchased it, they've done numerous renovation projects to preserve and update the property, including the addition of a master suite.

The homeowners have once again turned to their trusted partner, Marvin® Windows and Doors, to breathe new life into the property's English basement, which receives little natural light and feels closed off from the outdoor living space that sits just outside.

Working with her architect and local Marvin dealer, Southern Lumber & Millwork, the homeowner has selected products that let in light while offering energy-efficiency and architectural accuracy to preserve the authenticity of her historic home.

To see a video diary of this renovation project, visit Marvin.com/Meredith



chic soak

Chandeliers are still lighting up bath decor, but consider the following safety guidelines: Fixtures should be at least 8 feet above the tub, and at least 3 feet in front of or behind it. (Rule of thumb: You shouldn't be able to stand in the tub and change the lightbulbs.)



Built around you.®

Marvin® Windows and Doors brings its *Built around you*® philosophy to life with every customer and every product it creates. A premier manufacturer of made-to-order windows and doors, Marvin offers unparalleled value with craftsman-quality construction, energy-efficient technology and the industry's most extensive selection of shapes, styles, sizes and options.



airy serenity

MODERN COMFORT AND
COTTAGE STYLE BLEND IN
THIS TRANQUIL BEAUTY.

writer ANDRIA HAYDAY
photographer ALISE O'BRIEN
field editor SALLY MATHESON

OPPOSITE: The vintage-look tub filler includes a handheld shower. Porcelain accents match those on the room's other faucets. **THIS PHOTO:** A groin-vault ceiling heightens the drama in this cottage-style master bathroom. On the perimeter, 8-foot ceilings define niches.



THIS PHOTO: Matching mahogany vanities align beneath mirror-decked windows. The statement tub supplies a modern counterpoint to traditional millwork and transom windows. **OPPOSITE:** A streamlined brushed nickel tub filler faucet presents a contemporary silhouette.





turning the tide

A TRADITIONAL-LOOKING
WATERSIDE HOME HARBORS
A SLEEK, SERENE BATH.

writer ANN WILSON
photographer JOHN BESSLER
field editor KARIN LIDBECK-BRENT

Many of the products in our featured kitchens and baths are available for purchase and are listed here.

[T] TO THE TRADE ONLY These items or services are not available to the general public. Contact a design professional for help.

[P] PAINT COLOR Because of the magazine printing process, paint colors depicted on our pages might vary slightly from manufacturers' colors. Use paint color names or numbers, when provided, as a starting point. To get the exact color you see in the magazine, take the page to a paint retailer for matching.



9-11 WHAT'S NEW

Wallcoverings Raffia Weave grass cloth in straw, Rinca wallpaper in coral—Thibaut; 800/223-0704; thibautdesign.com. **Tile** Haveli by Neisha Crosland, Thunder Field in Black on Cream, Pollen Field in Orange Gray, Thunder Field in Black Henna, Field in Red Brushed, Z Stripe Field in Moss Red—Ann Sacks; 800/278-8453; annsacks.com. **Hardware** Hamptons Wire and Bamboo pulls—Atlas; 800/799-6755; atlashardware.com.



29-31 10 THINGS TO LOVE

Pizza oven—Mugnaini; 888/887-7206; mugnaini.com. **Cooktop**—Wolf Appliance, Inc.; 800/332-9513; subzero-wolf.com. **Vent hood**—Broan; United States: 800/558-1711, Canada: 877/896-1119; broan.com. **Refrigerator/freezer, warming drawer** Monogram; **icemaker**—GE Appliances; 800/626-2000; geappliances.com. **Cabinetry** Venicia (discontinued)—KraftMaid;

888/562-7744; kraftmaid.com. **Tile: backsplash** gray, **accent red**—Atlas Marble & Tile; 410/315-8720; atlastile.com; **stair risers**—Daltile; 800/933-8453; daltile.com. **Countertops** granite—check with local suppliers. **Chopping block**—John Boos & Co.; 217/347-7701; johnboos.com. **Main sink, faucet**—Elkay; 630/574-8484; elkayusa.com. **Bar sink, faucet**—Kohler Co.; 800/456-4537; us.kohler.com. **Light fixture above island**—Hubbardton Forge; 802/468-3090; vtforge.com. **Barstools** Vegas Décor Acrylic—Kitchen Source; 800/667-8721; kitchensource.com.



38-41 SMALL KITCHEN

Interior design—Nikie Barfield, Nikie Barfield Design, LLC; 404/226-1324; nikiebarfield.com. **Range, vent hood, dishwasher**—Viking Range Corp.; 888/845-4641; vikingrange.com. **Refrigerator**—Sub-Zero, Inc.; 800/222-7820; subzero.com. **Cabinetry**—Timber Mountain, Inc.; 678/455-0158; timber-mountain.com. **Cabinetry paint: exterior** Dover White—The Sherwin-Williams Co.; 800/474-3794; sherwin-williams.com [P]; **interior** Martha Stewart Enamelware—Home Depot USA, Inc.; homedepot.com [P]. **Cabinetry hardware**—Restoration Hardware; 800/910-9836; restorationhardware.com. **Countertops, backsplash** Statuary marble—G&L Marble;

404/873-2832. **Sink**—Waterworks; 800/998-2284; waterworks.com. **Faucet**—Newport Brass; 949/417-5207; newportbrass.com. **Breakfast room fixture**—Pierre Deux. closed; check local suppliers or eBay, ebay.com. **Rug**—Max & Company; 404/816-3830; phoebehoward.net/max-and-company. **Table, chairs**—Shabby Chic; 888/883-0550; shabbychic.com. **Clock**—A. Tyner Antiques; 404/367-4484; swedishantiques.biz.



42-43 SMALL BATH

Designer—Susan Anthony, Anthony-Wright Interiors, LLC; 914/693-4400; anthony-wright.com. **Shower fixtures, faucet, toilet, vanity, tiles, lighting, medicine cabinet**—Waterworks; 800/998-2284; waterworks.com. **Shower doors**—Manhattan Shade and Glass Co., Inc.; 212/288-5616; manhattanshadeandglass.com. **Wallpaper**—Osborne & Little, 877/322-7420; osborneandlittle.com [T].



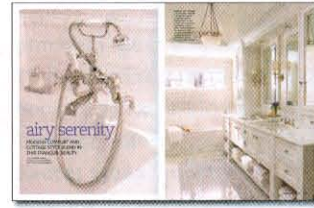
106-111 QUEEN FOR TODAY

Architect—Aleck Wilson, Aleck Wilson Architects; 415/765-9095; aleckwilsonarchitects.com. **Cooktop** Rangetop—Wolf Appliance, Inc.; 800/332-9513; subzero-wolf.com. **Vent hood** Stilo—Faber; 508/358-5353; faberonline.com. **Ovens** Masterchef Double, **dishwasher**—Miele, Inc.; 800/463-0260; mieleusa.com. **Refrigerator, wine refrigerator**—Sub-Zero, Inc.; 800/222-7820; subzero.com. **Cabinetry: at range and sink, island** Jarrah, **upper-cabinet doors above vent hood** 3Form Linen Tobacco—Bo Williams, Inc.; 415/884-0503; bowilliamsinc.com. **Cabinetry paint** Oakwood Manor—Benjamin Moore; 888/236-6667; benjaminmoore.com [P]. **Cabinetry hardware**—Linnea; 800/219-2366; linnea-home.com. **Roll-up metal door**—Häfele America Co.; 800/423-3531; hafele.com/us. **Backsplash stone mosaic** in Rosa—Ann Sacks; 800/278-8453; annsacks.com. **Countertops: perimeter** Desert Limestone—CaesarStone US; 818/779-0999; caesarstoneus.com, **island granite** Nacarado—Dennett Tile and Stone; 707/586-5390; dennett-tile.com. **Sinks**—Franke Kitchen Systems Division; 800/626-5771; frankeksd.com. **Faucets** Metro E—Hansgrohe; 800/334-0455; hansgrohe-usa.com. **Flooring** white oak—Amber Flooring; 510/652-6161; amberflooring.com. **Windows** Marvin Clad Ultimate—Marvin Windows and Doors; 888/537-8268; marvin.com. **Flower vase**—West Elm; 866/428-6468; westelm.com (product line varies). **Tray, dish towels, hand soap, lotion, copper bowl**—Summerhouse Gallery; 415/383-6695; summerhouses7millvalley.com. **Utensil holder**—Crate & Barrel; 800/967-6696; crateandbarrel.com (product line varies). **Clock**—Pottery Barn; 800/922-5507; potterybarn.com (product line varies).



112-117 SECOND CHANCE

Kitchen designer—Mary Kathryn Timoney, Design Galleria; 404/261-0111; designgalleria.net. **Contractor**—Timoney Construction; 404/838-3661; timoneyconstruction.com. **Cooktop, wall ovens**—Wolf Appliance, Inc.; 800/332-9513; subzero-wolf.com. **Refrigerator**—Sub-Zero, Inc.; 800/222-7820; subzero.com. **Dishwasher, warming drawers**—Miele, Inc.; 800/463-0260; mieleusa.com. **Dishwasher drawers**—Fisher & Paykel Appliances, Inc.; 888/936-7872; usa.fisherpaykel.com. **Cabinetry** Downsview, **vent hood** custom—Design Galleria; 404/261-0111; designgalleria.net. **Vent hood stone**—Francois & Co.; 404/842-3647; francoisandco.com. **Cabinetry hardware**—Matthew Quinn Collection; 404/974-3560; matthewquinncollection.com. **Countertops: marble** Calacatta Gold—Stone Professionals, Inc.; 404/351-3271; **wood**—Craft Art; 404/352-5625; craft-art.com. **Sinks**—Blanco America, Inc.; 800/451-5782; blancoamerica.com. **Faucets**—Rohl; 800/777-9762; rohllhome.com. **Light fixtures**—South of Market; 873/723-1114; southofmarket.biz. **Bar stools**—Cheryl Womack, Womack Interiors; 404/256-0704; womackinteriors.com.



118-121 AIRY SERENITY

Bath designer—Steve Karp, LEED AP, Christopher Peacock Cabinetry; 312/321-9500; peacockhome.com. **Architect**—Jay Schoessel, SP Architects; 314/872-9700; sp-stl.com. **General contractor**—Troy Duncan, PK Construction, LLC; 314/692-8383; pkconstructionstl.com. **Interior designer**—Corinne Jones, Corinne Jones Interiors; 314/993-5877; corinnejonesinteriors.com. **Painter**—Bill Stack, Koch Bros. Decorating, Inc.; 314/862-8383; kochbrosdecorating.com. **Tile**—Joe Baldi, R & F Tile and Marble Co.; 636/441-2682. **Tub**—BainUltra; 800/463-2187; bainultra.com. **Tub, shower and sink fixtures**—Lefroy Brooks; 718/302-5292; lestroybrooks.com. **Sinks**—Kallista; 888/452-5547; kallista.com. **Cabinetry** Scullery—Christopher Peacock Cabinetry; 312/321-9500; peacockhome.com. **Cabinetry hardware**—Nanz; 212/367-7000; nanz.com. **Counter and tub deck** Statuary marble—check with local suppliers. **Flooring and mosaic** White Thassos—Ann Sacks; 800/278-8453; annsacks.com. **Lighting: ceiling pendant**—Vaughn Designs; 212/319-7070; vaughndesigns.com [T]; **sconces**—Palmer Hargrave, Inc.; 785/434-2011; palmerhargrave.com. **Wall treatment** LustreStone—Kirchner Block & Brick; 314/291-3200; lustrestone.com. **White towels** Hotel Collection—Macy's; 800/289-6229; macys.com. **Pewter shell dish, candle with silver lid, glass soap dish, glass pedestal** Annieglass, **powder Lady Primrose** Dusting Silk, **candle Lady Primrose** Tryst, **bath foam** Linge Blanc, **Tuscan tissue holder** Arte Italice—Sallie Home; 800/257-9167; salliehome.com. **Bath salts** Tilleul Bain (Lime Tree)—Cote Bastide; cotebastide.com. **Sea sponge**—Whole Foods Market, Inc.; wholefoodsmarket.com.



122-127 TURNING THE TIDE

Bath designer—Laura Kaehler, AIA; **project architect**—Richard Basic; **project team**—Thalassa Curtis, Laura Kaehler Architects, LLC; 203/629-4646; kaehlerarchitects.com. **Interior designer**—Elizabeth Chequer Hendee, Chequer Interiors, LLC; 203/858-3364; chequerinteriors.com. **Structural engineering**—Edward Stanley Engineers, LLC; 203/458-0210; edwardstanleyengineers.com. **Builder**—Michael S. Gallo Builder; 203/375-1047; Mike Gallo, project manager; Joe Gallo, supervisor. **Tub** Balneo Series—BainUltra; 800/463-2187; bainultra.com. **Tub faucet** Axor in brushed nickel—Hansgrohe; 800/334-0455; hansgrohe-usa.com. **Shower faucet** Atrio Series in brushed nickel—Grohe America, Inc.; 800/201-3407; groheamerica.com. **Sinks** hammered satin nickel undermount—Bates and Bates; 800/726-7680; batesandbates.com. **Cabinetry, shower glass door, mirrors**—Laura Kaehler Architects, LLC; 203/629-4646; kaehlerarchitects.com. **Cabinetry hardware** in satin nickel, **glass door hardware**—Klaff's; 800/552-3371; klaffs.com. **Countertops** Carrara marble—check with local suppliers. **Shower, walls, flooring** Carrara marble—Rye Ridge Tile; 914/939-1100; ryeridgetile.com. **Paint: wood paneling** White Dove, **ceiling** Beacon Gray, **water closet walls** November Skies—Benjamin Moore; 888/236-6667; benjaminmoore.com [P]. **Windows**—WeatherShield; 877/452-5535; weathershield.com. **Towel rings, sconces** Kubic Series in satin nickel—Ginger; 800/842-4872; gingerco.com. **Accessories, towels**—Waterworks; 800/998-2284; waterworks.com.



128-131 CHARCOAL CHARM

Bath designers—Leslie Rylee, Dennis Fisher, GRF Group, Inc. Architectural Design; 212/473-6306; grfgroupinc.com. **Builder**—Amber Construction & Design; 860/693-0040; amberconstruction.net. **Landscape designer**—Elizabeth Kobes; 902/229-3475; elizabethkobes.blogspot.com. **Interior designer**—Leslie Rylee, GRF Group, Inc. Architectural Design; 212/473-6306; grfgroupinc.com. **Tub** vintage—Howard Kaplan Designs; 646/443-7170; howardkaplandesigns.com. **Tub, shower fixtures**—Waterworks; 800/998-2284; waterworks.com. **Sinks** Caxton, **toilet** Memoirs—Kohler Co.; 800/456-4537; us.kohler.com. **Shower door**—CT Shower & Bath; 860/236-6500; ctshowerandbath.com. **Vanity** custom design—GRF Group, Inc. Architectural Design; 212/473-6306; grfgroupinc.com. **Vanity fabrication, installation; mirrors**—Amber Construction & Design; 860/693-0040; amberconstruction.net. **Shower tiles, floor tiles**—Ann Sacks; 800/278-8453; annsacks.com. **Sconces**—The Urban Electric Co.; 843/723-8140; urbanelectricco.com. **Wall paint** Downpipe—Farrow & Ball; 888/511-1121; farrow-ball.com [P]. **Window shades**—Window Wares; 518/789-0920. **Table by tub**—Target Stores; 800/800-8800; target.com (product line varies). **Cotton ball containers**—Crate & Barrel; 800/967-6696; crateandbarrel.com (product line varies). **Square silver container on vanity**—Anthropologie; 800/309-2500; anthropologie.com.



132-135 FAMILY TIES

Bath designer—Andrew Parks, AC Parks Design; 863/381-2585; e-mail: acparksdesign@gmail.com. **Builder**—Ricky Brown, RB Construction, through AC Parks Design; 863/381-2585; e-mail: acparksdesign@gmail.com. **Interior designer**—Courtney Parks, NCIDP, AC Parks Design; 863/381-2585; e-mail: acparksdesign@gmail.com. **Tub** Escalé drop-in, **tub filler, sink faucets** Purist, **showerhead** WaterTile rain shower, **sinks**—Kohler Co.; 800/456-4537; us.kohler.com. **Cabinetry, tub surround** custom cherry wood—Paul Hale, through AC Parks Design; 863/381-2585; e-mail: acparksdesign@gmail.com. **Countertop** DuPont Zodiaq Quartz Surfaces; 877/229-3935; zodiaq.com. **Tile: back wall mosaic, shower tiles, border mosaic** Arctic Cloud; **floor and shower wall tile** Temple Gray—Home Depot USA, Inc.; homedepot.com. **Lighting: pendant** Capiz—Pottery Barn; 800/922-5507; potterybarn.com (product line varies); **sconces** Bryant—Circa Lighting; 877/762-2323; ciricalighting.com. **Bar soaps, bath salts, foaming bath wash, body lotion** Barr Co., **mercury glass vase, mercury footed canister and perfume bottles on vanity tray, cut-glass chemist's jar**—Anthropologie; 800/309-2500; anthropologie.com. **Towels** Charter Club in Lavender—Macy's; 800/289-6229; macys.com. **Soap dish** clear glass oval—Crate & Barrel; 800/967-6696; crateandbarrel.com (product line varies).