

BATHROOM TRENDS

TRADITIONAL · CONTEMPORARY · OUTDOOR CONNECTIONS · REMODELS



0 71896 43444 6 05>



DISPLAY UNTIL MAY 26 US\$10.95

search [trendsideas.com](https://www.trendsideas.com)



Glamorous welcome

With glittering reflections, dancing flames and smooth textures, this master bathroom is reminiscent of a spa retreat



Interior design can resonate like music – each instrument has its own voice, but joins with others to harmonious and delightful effect.

A subtle meld of textures, finishes and materials come together in this bathroom to give it a sleek air. The design is by Perimeter Architects and partner John Issa says the owners wanted the space to have the feel of a refined hotel spa.

“I approached this concept in several ways, including introducing a furniture-like vanity. We designed this piece without handles, and oriented the wood grain at a 30° angle, running from the centre out to the corners,” says Issa.

“Every attempt was made to bring out the beauty of the material without the distractions of the typical function solutions of cabinetry. The countertop is a leather-finish granite and this is separated from the wood by a stainless steel reveal – one of many touches of reflectivity in the room.”

Over the vanity, an expansive back-lit mirror adds to the sense of volume. Slender tiles were chosen for the wall behind to maximise shadow-play from the concealed lighting. The same dark tile colour was used on the floor, but honed for a matte finish and in a large format.

Above left: A variety of reflective surfaces, a sparkling chandelier and roaring open fire all add up to a welcoming bathroom environment that exudes the sparkle and harmony of a spa in a five-star hotel. The eco-friendly, clean-burning butane fire has a glass safety screen, which also catches the light.





Bathroom and interior designer:

John Issa, partner, Perimeter Architects (Chicago)

Builder: Restoration Development

Cabinet company: Lagamorph Design

Vanity: Granite countertop, leathered finish, from Stone Works; cabinetry in walnut and steel

Basin: Rectangular, white deck-mount Vox Vessel Lav from Ferguson Enterprises

Faucets: Mirabelle, Winter Haven Series in polished nickel

Tub: Olivia, freestanding, from MTI Baths

Shower fittings: Kohler 8in contemporary rain showerhead in chrome, with Mirabelle Winter Haven pressure-balanced trimless diverter in polished nickel

Shower stall: Tempered, sand-blasted glass with chrome hardware

Shower tiles: Lea Storm Series, Mur, from Direct Floors

Bedroom flooring: Kährs Spirit, Arctic Oak, engineered

Bathroom floor: Lea SRDA tiles in Dark Storm from Direct Floors

Fireplace: Ecosmart, zero clearance, Bioethanol burning, in stainless steel

Drapes: RM/Dupioni, interlined Ripplefold in black, lined in Sonata Sateen in white

Story by Charles Moxham

Photography by Eric Hausman

shower and accentuate the visual impact of its multi-toned surfaces.”

The freestanding tub is naturally a feature of the room. Set by the fire at the request of the owners, it is the perfect place from which to watch the snow fall outside the window.

To optimize a sense of space and light, the toilet cubicle positioned to the left of the shower is in frosted glass.

The approach from the bedroom is long and narrow and the bathtub, chandelier and reflective wall all catch the eye from that room, says the architect.

“We also reinvented the master bedroom, introducing darker walls tones that create an attractive contrast with the bathroom. This color treatment gives the bedroom a plush, Hollywood feel, augmented by luxurious furnishings and bedding. They took a little convincing, but eventually the owners agreed to leave the dressing mirror leaning against the wall – this adds to the sense of airy, casual refinement.”

[save | share | images](#)

▶ Search 42598 at my.trendsideas.com

Above left: The owners wanted the master bedroom to have the feel of a plush hotel room. Tactile furnishings, dark walls and a large mirror all contribute to this. The bedroom floors are in Kährs Spirit, an engineered wood, in Arctic Oak, augmenting the drama of the near-black walls.



White on white

Varying textural elements and innovative accessories enhance this feminine space

Above: This all-white bathroom replaces a dated master bathroom with fully fitted cabinets. The owners wanted it to be a feminine bathroom – one of two in the master suite. Furniture-style cabinetry, including a bow-front vanity, enhance the look. Crystal knobs on the cabinets and faucets add a little sparkle and glamour.

An all-white bathroom can be just as visually arresting as a more colorful room, but the drama is in the detailing, materials and textures.

The owners of this house each have their own bathroom, but it was the feminine one that needed the most attention, says architect Bruce Wentworth.

“It was probably 10-15 years since the room was last remodeled, and the materials used at that time were relatively inexpensive,” the designer says. “At that time, it was also designed for two people, and that functionality was no longer required.”

Wentworth says the owner wanted a white bathroom and she wanted it to feel feminine. There needed to be a place where she could put on make-up, and plenty of good storage.

“The painted white vanity cabinetry is very furniture like, and we created a bow front to the main cabinet to make it stand out, almost like a separate piece of furniture. For the top, we chose a marble that has a slight veining, which picks up on the white-on-white theme.”

For added glamour and sparkle, there are crystal knobs on the faucets, drawer pulls and cabinet doors.





Architect: Bruce Wentworth AIA, Wentworth, Inc (Chevy Chase, MD)
Builder: Wentworth, Inc
Vanity cabinet: Wood Harbor, painted
Vanity top: Marble
Basin: Kohler Caxton
Faucets: Waterworks Opus with crystal Egg handles
Bathtub: MTI
Shower fittings: Kohler
Showerhead: Kohler Purist
Flooring: Wolfgang White and Town Niquel from Artistic Tile; Marmi Blanco from Porcelanosa
Wall tiles: Marmi Blanco from Porcelanosa
Lighting: Lightolier; Visual Comfort
Ventilation: Panasonic
Underfloor heating: Warmly Yours
Tower warmer: Hot Cabi by New Life Systems

Story by Colleen Hawkes
Photography by Ron Blunt

save | share

▶ Search 43294 at my.trendsideas.com

The cabinetry wraps around a corner of the bathroom, and finishes beside a tall cabinet with frosted glass doors. This incorporates one of the owners' key requirements – a Hot Cabi UV sterilizer for face towels. These are kept steaming hot and ready for use.

"The owner also liked the idea of having no curb to the shower, so this is like a wet area that she can just walk straight into," says Wentworth. "For added visual drama, the wall tiles are embossed with a mosaic-like pattern."

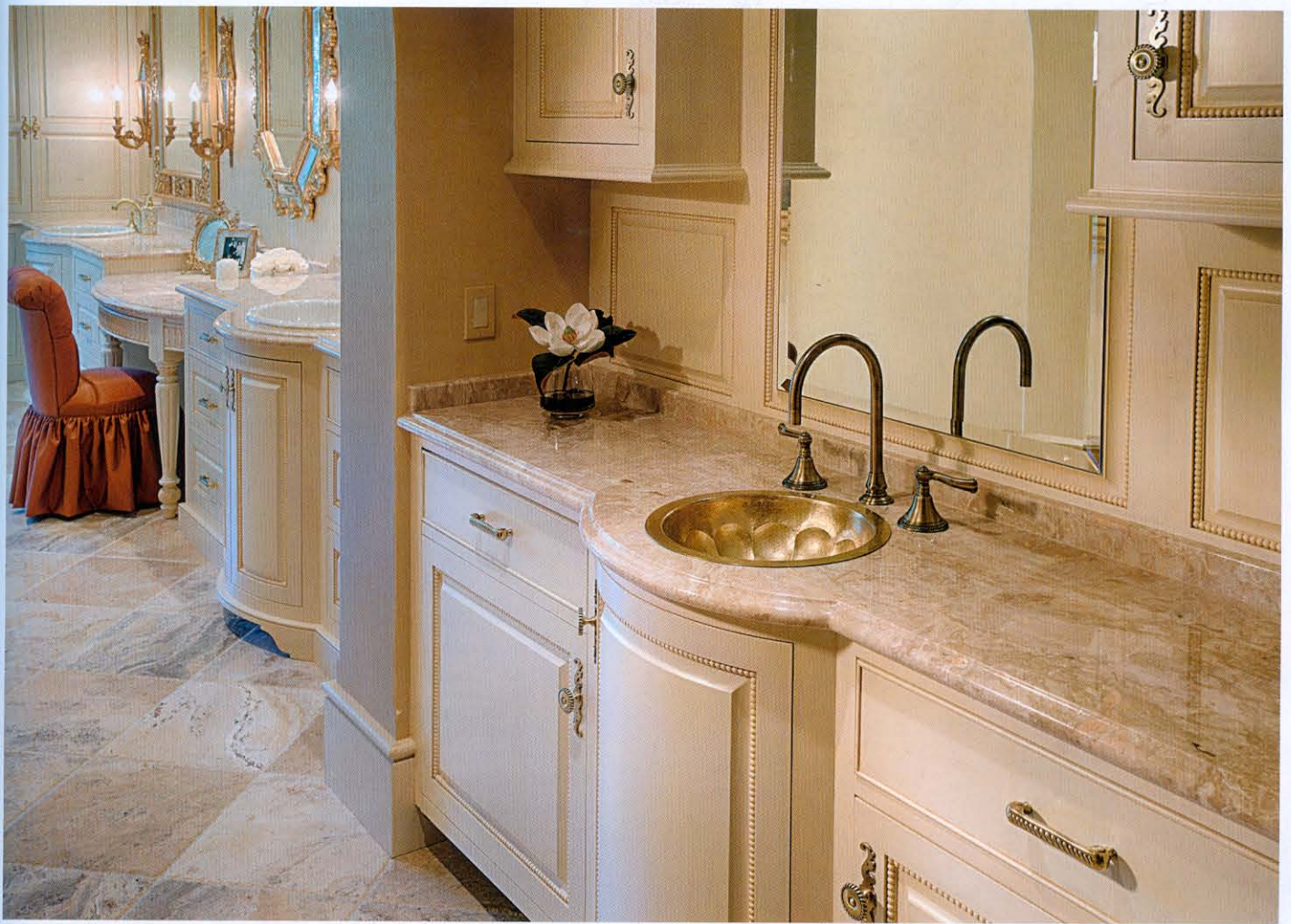
A textural wall treatment also defines the tub area on the opposite side of the room. Here,

Wentworth positioned a freestanding sculptural tub on an angle beside French doors opening out to the garden. The wall behind the tub is clad in a drywall product featuring a rippling, textural pattern that is reminiscent of waves.

The tiled flooring is another key feature of the bathroom. Large white ceramic tiles from Porcelanosa cover most of the floor, but there is a decorative square in the center, like an area rug. This is inset with Wolfgang oval glass tiles that glitter under a chandelier. The glass tiles are bordered by Carrara marble. Underfloor heating ensures comfort through all seasons.

Facing page: A sculptural freestanding tub sits beside the French doors that open to the garden. The textural wall features embossed, painted drywall panels.

This page: The details make the difference. The bathroom includes a New Life Systems Hot Cabi sterilizer for face towels. Niches in the shower walls accommodate sponges and other shower products.



Behind the scenes

A suite for a movie star – the latest traditionally styled bathrooms have a serene, glamorous look, reminiscent of the glory days of Hollywood

Interior designers are right up with the play when it comes to design trends, new products and materials, so it is always interesting to see what they choose for their own homes.

When Terri and Doug Miller came to remodel the master suite in their own California family home, they took their cue from the home's Mediterranean style and its location in the Napa Valley.

“Our goal was to blend the Spanish architecture with traditional design elements that would be elegant and enduring,” says designer Terri Miller. “Over the years, we have accumulated various antique items, and these helped influence the design.”

The first step, however, was to alter the layout of the suite, to better suit the family's requirements.



Preceding pages and facing page: This master bathroom in a ranch house has created a glamorous private retreat for the owners. Owner-designer Terri Miller specified three decorative mirrors, with matching sconces. The center mirror sits above a lowered make-up table. Bow fronts on the table and vanities help to break up the long expanse of cabinetry.

This page: The suite has a coffee area with sink and refrigerator.



"We have taken a little space from the bedroom to make the bathroom and closet larger, and we added a coffee bar and laundry facilities."

Miller says the original bathroom had a very '80s look. The space was filled by a big built-in tub and a circular shower that stood right in the center of the room.

"It was very dated, with inexpensive finishes that were

not of the same high standard as we were using in the rest of the house."

The designer says she wanted the new bathroom to have a serene feeling, with soft, flattering colors.

"The cabinetry needed to be beautiful, but not intrusive, especially as it runs all the way along one side of the room. We also wanted three separate, framed mirrors, rather than

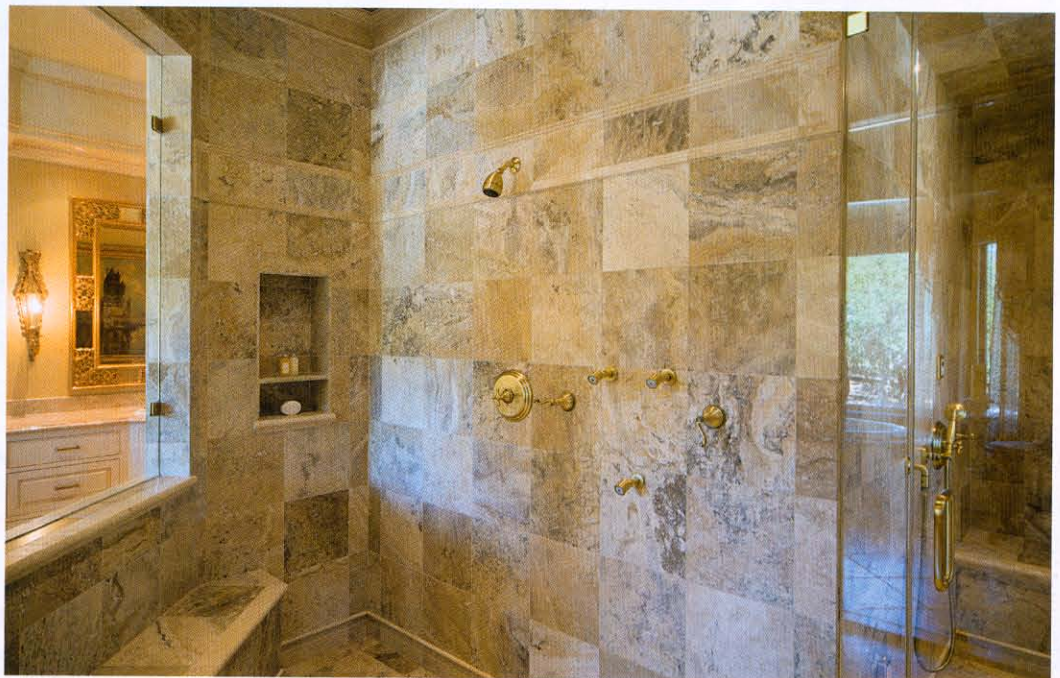
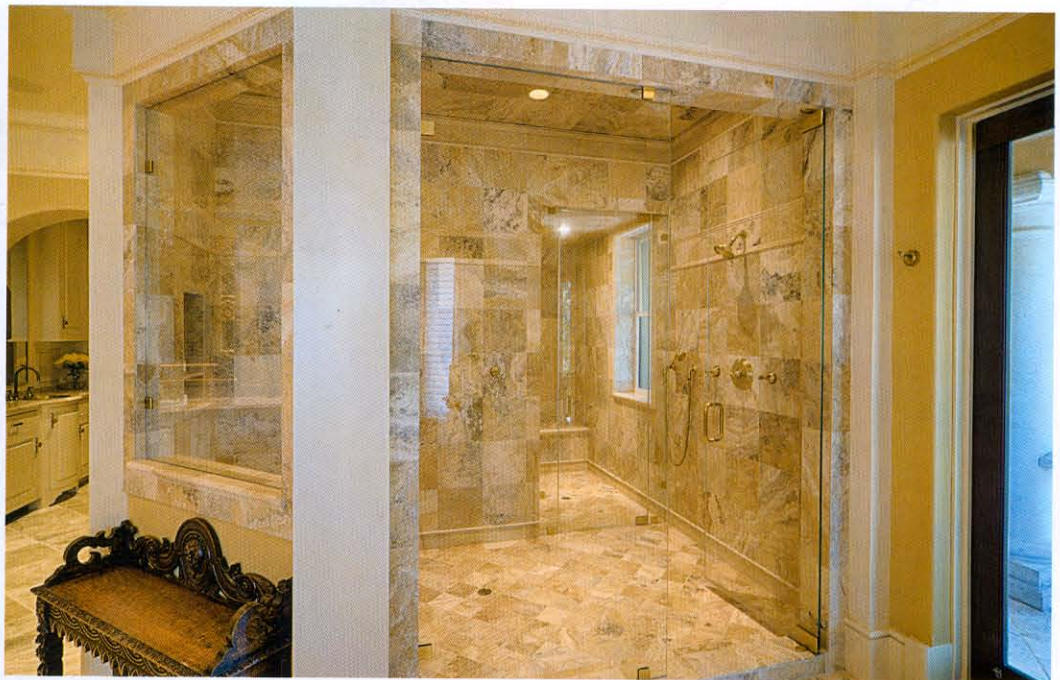
a great expanse of mirror."

Miller liaised closely with fine cabinetmaker Mike Peachey of The Elegant Box in Georgia to build the cabinetry, and San Francisco decorative artist Caroline Lizarraga to fine-tune design elements, paint colors and glazing. Local builder Larry Ellis of Ellis Construction oversaw all aspects of the construction.

The bathroom also features

an extra-large, marble-lined shower room and a separate, matching steam shower. Terri Miller says that while beauty and elegance were important, the couple also wanted to achieve the desired high level of functionality.

"Subtle innovations can make a big difference. In a master bathroom, especially, you want to consider not only how things look, but how well



they work on a daily basis. A simple example is the slight slope of the ceiling in the steam shower that keeps condensation from dripping.”

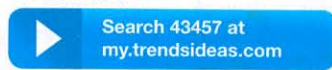
The pièce de résistance, however, is the freestanding tub positioned in the bay window. The oval shape of the tub, and the bow-fronted vanities help to visually soften the room, enhancing the sense of a tranquil, private sanctuary.

Interior designer: Terri Miller, Grace Miller Interiors (Napa, CA and Albany, GA)
Builder: Ellis Construction
Cabinet company: The Elegant Box
Decorative artist: Caroline Lizarraga
Stonework: Bob Spoor Masonry & Tile
Tub: MTI Whirlpools Tristan in Biscuit
Vanity top: Marble by Surface Art
Basins: Jenny by Bates and Bates
Faucets: Cifial in French Bronze
Lighting: Thern Electric; decorative sconces from Ebanista with custom paint finish by Caroline Lizarraga
Mirrors: Decorative Crafts, John-Richard

Windows and French doors: Marvin
Door hardware: Rocky Mountain
Blinds: Silhouettes in Matisse from Hunter Douglas
Drapes: Grace Miller Interiors, made and installed by Pollin’s Upholstery

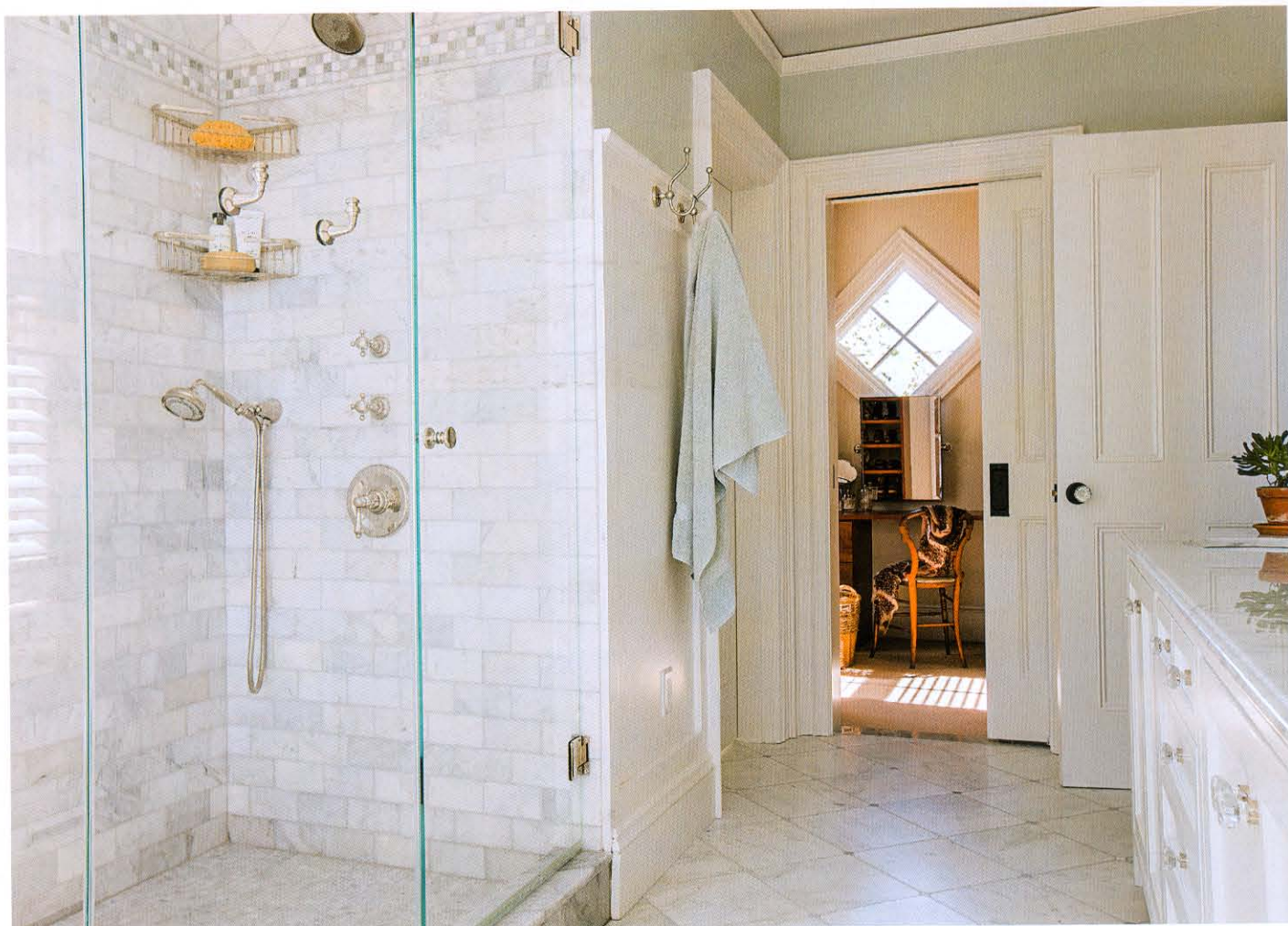
Story by Colleen Hawkes
Photography by Tim Maloney

save | share



Above left: An MTI Whirlpools tub sits in front of a new bay window. The sense of intimacy is enhanced by a lowered soffit crafted by the cabinetmaker. Decorative artist Caroline Lizarraga painted the glazed finish on the cabinets.

Top and above: The bathroom also features a large, marble-lined shower room that leads to a steam shower. Floor tiles are laid on the diagonal for added visual interest – they also sit more easily with the angled walls.



Victorian charm

This master bathroom, in a new addition to a Victorian house, replicates the original traditional wall casings and marble floors in the home

Traditional houses are often full of character, but they were not always designed to make the most of a great location.

This new master bathroom is in a new addition to a Victorian house on a picturesque inner harbor. Project designer Steve Harrington of Carpenter & MacNeille says the existing master suite was on the other side of the house, facing the street rather than the view.

“By adding an extra story to an earlier addition at the rear, we were able to create a new suite that maximizes the water views.”

Harrington says the owners wanted the suite to be in keeping with the era of the house. Consequently, the bathroom replicates the existing millwork, right down to the casings and the cap on the high wainscoting.

“Because the new addition was limited to the size of the existing footprint, the furniture-style cabinetry and custom built-in paneling was used to maximize the space and create a cohesive look.”

The sense of tradition is reinforced by a Victoria & Albert freestanding tub positioned beneath the window. White painted shutters on the lower part of the window

further enhance the look and help to maintain privacy.

Honey Collins, the interior designer on the project, teamed the white vanity with a soft green paint shade on the walls.

“The client wanted a beach feel, since they live on the coast. The green is reminiscent of the ocean. The color is also picked up by the small green tiles inset in the larger Carrara marble tiles on the floor.”



Collins also specified Carrara marble for the vanity tops and shower tiles, albeit in a different scale for added visual interest.

“Carrara marble is very versatile – it works in traditional and modern settings.”

In this bathroom, the floor tiles are laid on the diagonal, which breaks up the long, narrow axis, helping to make the space seem larger.

Project designer: Steve Harrington, Carpenter & MacNeille (Essex, MA)
Interior designer: Honey Collins, Honey Collins Interior Design
Builder: Carpenter & MacNeille
Cabinet company: Stephen Terhune Woodworking
Tub: Victoria & Albert York Classic
Tub filler: Jado Savina
Vanity cabinet: Painted
Vanity top: Carrara marble
Basins: Toto
Faucets: Restoration Hardware Chatham

Shower fittings: Rohl
Flooring: Carrara marble from Tile by Design
Paints: Farrow & Ball
Lighting: Restoration Hardware Chatham single sconces

Story by Colleen Hawkes
Photography by Michael J Lee

save | share



Search 43292 at
my.trendsideas.com

Facing page: Carrara marble is teamed with white painted millwork in this new bathroom in a traditional Victorian house. The sliding door opens to a dressing room, while the door to the toilet room is on the left.

Above: Traditional features include a Victoria & Albert tub. The wall paneling and mouldings replicate existing details in the house, right down to the cap on top of the wainscoting and the blocks behind the light sconces.