

Beautiful KITCHENS & BATHS

30
MOST
INNOVATIVE
PRODUCTS
2016

MAKE YOUR
KITCHEN
Gorgeous

GOING GRAY
Why We Love
This Versatile Hue

**STORAGE
SOLUTIONS**
That Really Work

**ULTIMATE BATH
RETREATS**
From Old-World
To Modern

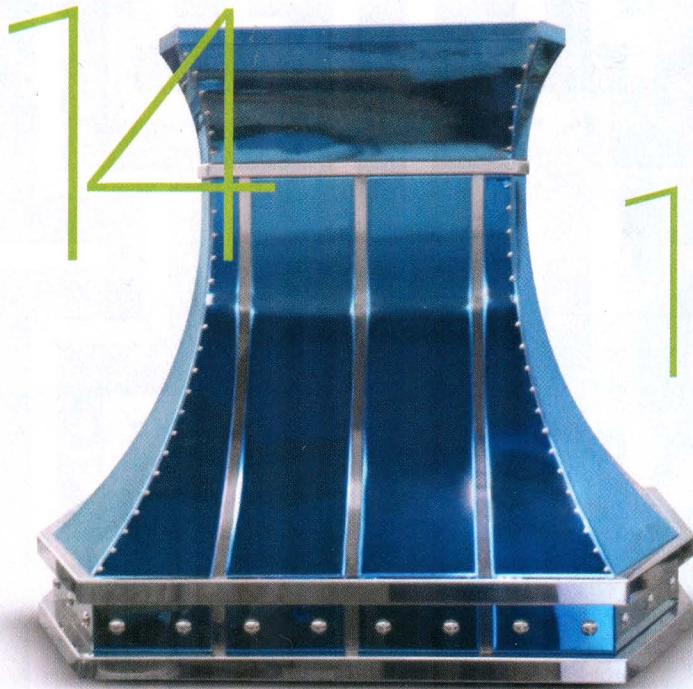
BHGspecials™

\$7.99 U.S.



BHG.com/KitchenBath

SPRING 2016
Display until June 13



13. TOASTY TOWELS

Classic style meets modern convenience in this console-style sink with a built-in towel warmer. There's no need to add a separate warming unit to your bath with this all-in-one solution that maintains the visual integrity of a bathroom's traditional design. **Heated Washstand (\$3,400)**. Sterlingham Company Ltd.; sterlingham.co.uk

14. STATEMENT PIECE

If you're looking for a range hood that is truly unique, look no further. Each piece is made one at a time to the customer's specifications with superior craftsmanship. This model uses a colored stainless steel made from a special manufacturing process. Powder coating is also available to match any color. **Miami Design in Electric Blue (starting at \$8,000)**. Rangepcraft; rangepcraft.com

15. FULL CAPACITY

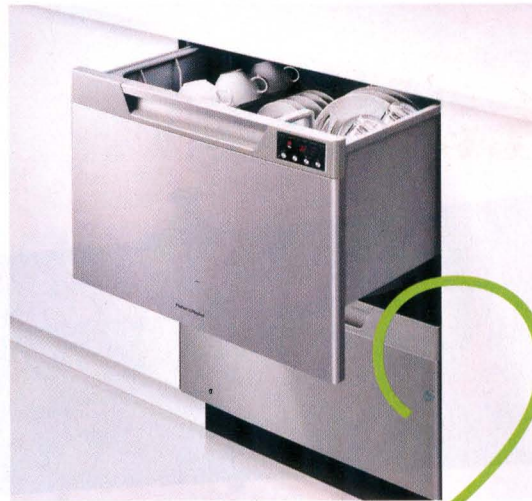
Supplement a busy kitchen with an extra freezer that tucks below the counter. This model features removable baskets that make it easy to find what you need. It even fits full-size pizza boxes and gallon-size ice cream containers. **Modular 3000 Series 24-inch Frost-Free Freezer (\$3,469-\$3,689)**. U-Line; u-line.com

16. EASY LAUNDRY

Tucked below this front-load washer is more than a typical pedestal drawer—it's another washing machine. Get through the laundry twice as fast when you can wash two loads at once. Or save on water when you run a small load through just the pedestal washer. **LG Twin Wash with SideKick Pedestal Washer (\$1,399-\$1,799 for LG Twin Wash; \$699-\$779 for SideKick Pedestal Washer)**. LG Electronics, lgtwinwash.com

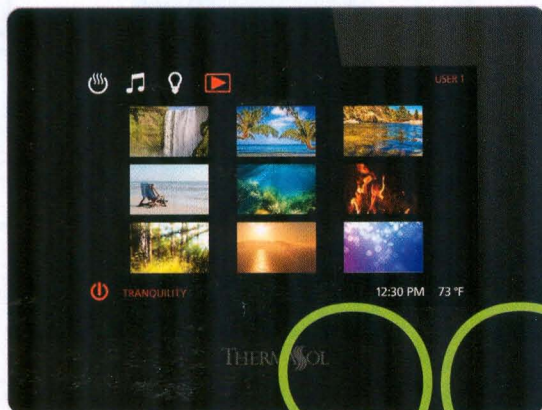


27



28

30



29

 **Winners' Circle**
Find the list of our 2016 winners online. BHG.com/30Most

27. OPEN PLAN

Like a magician's assistant, this shower is there one minute and gone the next. Innovative engineering allows the two exterior shower doors to be folded back against the wall when not in use. Who couldn't use a few extra square feet in the bath? **OpenSpace B** (starting at \$2,705). Duravit; duravit.us

28. DOUBLE DUTY

Designed to fit into the space of a traditional dishwasher, this double drawer design offers great flexibility. It can clean dishes in a single drawer, using less water and electricity, or both drawers at the same time. There is also an eco feature for further efficiency. **DishDrawer** (\$1,299). Fisher & Paykel; fisherpaykel.com/us

29. SERENE SCENE

Using a 7-inch touch screen, users can control a soothing spa experience in the shower that incorporates water, steam, music, chromatherapy, and even relaxing tranquility videos. It's easy to set up a profile and save your favorite settings so you always get the custom spa experience you crave. **ThermaTouch** (\$1,695). ThermaSol; thermasol.com

30. INTEGRATED SINK

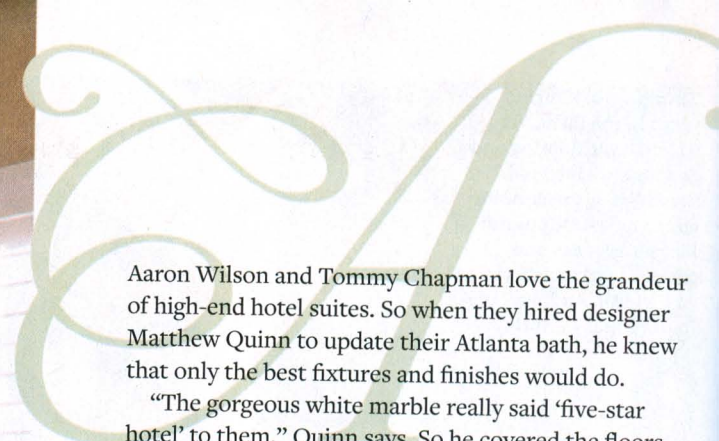
This clever contemporary sink makes use of the material that was cut out of the countertop during installation. The cutout piece serves as a false bottom for the sink, so the counter appears intact. Without a traditional sink drain in view, the water flows organically to the edge of the circle and drops to the sink base recessed below the counter. **Continuum Sink** (\$1,029). MTI Baths; mtibaths.com

Five-Star Getaway

Luxurious fixtures and amenities make this master bath feel like a vacation at home.

WRITER AND FIELD EDITOR LISA MOWRY
PHOTOS ANTHONY-MASTERTSON





Aaron Wilson and Tommy Chapman love the grandeur of high-end hotel suites. So when they hired designer Matthew Quinn to update their Atlanta bath, he knew that only the best fixtures and finishes would do.

“The gorgeous white marble really said ‘five-star hotel’ to them,” Quinn says. So he covered the floors in classic Calacatta Gold marble, ran the stone up the walls as wainscoting, and used it on all sides of the spacious walk-in shower. “I found the multiple shapes, sizes, and patterns of the same stone to be very pleasing to the eye,” Aaron says. Radiant heat underfoot and a sculptural soaking tub, designed by Quinn, luxuriously affirm the room’s five-star rating.

Quinn wasn’t able to expand the floor plan, but his redesign made the most of the rectangular footprint. “To make the space more open, we eliminated the existing linen closet and designed a piece of furniture for storage instead,” he says. Taupe-glazed vanities and a freestanding armoire resemble furniture, and the interiors are custom-designed with compartments for toiletries and shaving supplies, and shelves for towels. Antiqued mirrors on the cabinet doors bounce light around and make the long, narrow space feel wider.

Quinn chose an antiqued brass finish for the fixtures at the tub, shower, and vanities, providing a warm contrast to all the white marble. Pulls on the vanity cabinetry and armoire complement the color palette with an element of surprise. “I wanted something organic in the room with natural color variation, so horn pulls were a great choice,” Quinn says.

With such a beautiful mix of materials and amenities, this bath makes Aaron and Tommy feel as if they’re staying at a ritzy hotel. And they never have to check out.

RESOURCES BEGIN ON PAGE 122.

DESIGNER INSIGHTS

Tub Savvy

Kitchen and bath designer Matthew Quinn knows tubs; he created a line of them for MTI Whirlpools. He shares his advice for choosing the perfect one.

- **Break the rules.** The style of a tub doesn’t have to match the style of the room. “I think there’s nothing sexier than a sleek modern tub in an über-traditional bath,” Quinn says.
- **Size it right.** Deep tubs are ideal for long soaks, while extra-long models can accommodate multiple bathers. Depending on the weight of the filled tub, you might need to beef up your bath’s floor support.
- **Consider materials.** Quinn’s tubs are made of engineered stone, which is stain-resistant, retains heat well, and requires less maintenance than a traditional cast-iron tub.



St. Simons Island, Georgia; 912/634-0782; deesimmonsinteriors.com. **Vanity hardware**—Restoration Hardware; 800/910-9836; restorationhardware.com. **Tile flooring and shower walls** Casa Bianca Turkish white marble, **tub surround, counter and backsplash** Carrara marble—contact local cut stone suppliers. **Paint on walls and on cabinet between vanities** Light Gray—Farrow & Ball; 888/511-1121; farrow-ball.com [P]. **Tub**—Oceania, 877/332-4224; oceania-attitude.com. **Tub faucet, rain showerhead, shower faucet, towel bars, sink faucets**—Rohl; 800/777-9762; rohlhome.com. **Sinks**—Kohler Co.; 800/456-4537; us.kohler.com. **Chandelier**—14th Street Antiques, Atlanta; 404/325-4600; 14thstreetantiques.com. **Ottoman**—O. Henry House, Ltd., High Point, North Carolina; 336/431-5350; ohenryhouseltd.com [T]. **Settee, small antique table flanked by doorways**—Scott Antique Market, Atlanta; 740/569-4112; scottantiquemarket.com. **Gilt-framed artwork at tub and at small table**—by Glenda Cason, represented by Fine Art America; fineartamerica.com. **Candlesticks at tub, candleholders on small antique table, leaf dishes on antique table and at tub, mercury glass case at tub, gold soap dishes, water glasses at vanities**—GDC Home, Mount Pleasant, South Carolina; 843/849-0711; gdchome.com. **Sconces flanking vanities, painting in lavatory** by Louise Hooper, **towels, all other accessories**—homeowners' collection.



LATITUDE ADJUSTMENT PAGES 112-117

Architect: Jeff Berkus, Jeffrey Berkus Architects, Inc., Aspen, Colorado; 970/925-7017; jeffreyberkusarchitects.com. **Interior designers:** Caroline Tyler Decesare, ASID, and Kelsey Hunzeker, DeCesare Design Group, Inc., Mesa, Arizona; 480/668-5490; decesaredesigngroup.com. **Builder:** Kirby Korth, CSE & Associates, Inc.; Scottsdale, Arizona; 480/473-4683; cseandassociates.com. **Decorative painter:** Kim Sweet, Sweet Decorative Painting, Inc., Phoenix; 480/423-8378; kim-sweet-f6z9.squarespace.com. **Vanities**—Dovetail Furniture, Los Angeles; 310/380-4800; dovetailfurnitureonline.com. **Vanity countertop** honed Crema Marfil marble, **floor tile** honed travertine in Versailles placement pattern—Arizona Tile & Stone, Scottsdale, Arizona; 480/893-9393; arizonatile.com. **Wall tile** custom painted—Tabarka Studio, Scottsdale, Arizona; 480/968-3999; tabarkastudio.com. **Copper tub**—Premier Copper Products through Wal-Mart Stores, Inc; walmart.com. **Vanity sinks**—Toto USA, Inc.; 800/350-8686; totousa.com. **Sink/tub/shower faucets, showerhead**—California Faucets; 800/822-8855; calfaucets.com. **Towel bars**—Trapper Peak Forge, Florence, Montana; 406/777-2201; trapperpeakforge.com. **Mirrors** decorative painting after purchase, **sea sponge** discontinued; similar items available—Restoration Hardware; 800/910-9836; restorationhardware.com. **Vanity sconces**—Relics Architectural Home & Garden, Phoenix; 602/265-7354; relicsaz.com. **Shutters** custom—Desert Cove Woodworks, LLC, Phoenix; 602/944-

0118; desertcovewoodworks.com. **Vase**—HomeGoods; 800/614-4663; homegoods.com (product line varies). **Ceramic stool**—Bungalow, Scottsdale, Arizona; 480/948-8409, bungalowaz.com. **Towels, chandelier**—homeowners' collection.



FIVE-STAR GETAWAY PAGES 118-121

Bath designer: Matthew Quinn, Design Galleria Kitchen & Bath Studio, Atlanta; 404/261-0111; designgalleria.net. **Interior designer:** Todd Bienz, Inc., Atlanta; 404/931-9074; toddbienz.com. **Contractor:** Tom Semelsberger, Regency General Contractors, Atlanta; 404/694-4571; regencyatlanta.com. **Cabinetry**—Design Galleria Kitchen & Bath Studio, Atlanta; 404/261-0111; designgalleria.net. **Cabinet hardware, mirrors**—The Matthew Quinn Collection; 404/974-3560; matthewquinncollection.com. **Countertops** Calacatta Gold marble—Stone Professionals, Inc., Atlanta; 404/351-3271. **Floor and shower tile** Calacatta Gold marble—Traditions in Tile and Stone, Atlanta; 404/239-9186; traditionsintile.com. **Sinks** Ladena—Kohler Co.; 800/456-4537; us.kohler.com. **Sink, tub and shower fixtures** The Matthew Quinn Collection—The Rubinet Faucet Co.; 800/461-5901; rubinet.com. **Tub** The Matthew Quinn Collection—MTI Baths; 800/783-8827; mtibaths.com.