

# BRIGHT IDEAS

If summer is the season of easy living, spring is the time for rejuvenation and redecoration, which, in theory and in practice, should also be hassle-free. In the service of (hopefully) painless renos, **Globe Style** canvassed some of Canada's best design pros for their favourite looks, foolproof palettes, top product picks and trustiest tips when it comes to creating chic kitchens, breathtaking bathrooms and extremely livable living spaces. Break out the paint chips and fabric swatches!



Kitchen

COURTESY OF LYNN MORGAN DESIGN (WWW.LYNNMORGANDESIGN.COM) AND BROOKS AND FALOTICO (WWW.BROOKSANDFALOTICO.COM)

## THE LOOK: BOLD AND BEAUTIFUL

For much of the past decade, ultra-slick restaurant-style kitchens featuring miles of stainless steel have dominated, but that trend is waning, as this colourful, high-gloss space by U.S.-based Lynn Morgan Design in conjunction with Brooks and Falotico demonstrates. "I love glossy finishes in kitchens, especially on cabinetry and walls," William MacDonald of Toronto-based William MacDonald Interior Design says. "However, the walls have to be absolutely free of imperfections, as high-gloss paint will show every blemish. And I love hits of colour in the kitchen. In my work, I often bring it in through art, fabrics and dishes. Occasionally, I incorporate a bold backsplash or use a vivid colour on cabinets, but clients have to really commit as strong colour on fixed pieces isn't always easy to change if they tire of it." This season, MacDonald and paint companies say, colours including blues, soft greens and yellows are among the trendiest choices for kitchens. If installing elements such as the turquoise panels around the kitchen island above seems like too big a commitment, however, colour, shine and sparkle can be introduced in any number of subtler, less permanent ways, from accent walls to lighting fixtures to drawer pulls. Most important: Pick shades, palettes and finishes you love and can live with on a daily basis, as you'll be staring at them over your morning coffee for at least a couple of years.

### THE PALETTE

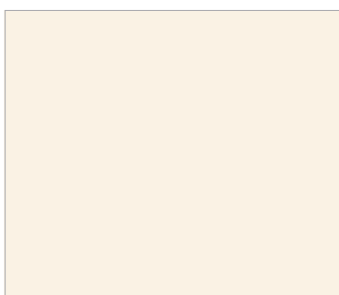
This trio from Sico will enliven any kitchen.



Want to add some watery whimsy to your galley? Use **Rio Grande** (6154-53) on a statement wall, backsplash, wood cabinetry or row of metal pendant lamps.



A brighter alternative to turquoise, **Mint Liquor** (6121-54) offers equal punch. The pair works well in tandem, too.



Subtle yet substantive, **White Artichoke** (6196-11) is an ideal neutral – and just as delicious as its name.

### ADVENTURES IN RENOVATING

DOS AND DON'TS FROM STYLE EDITOR DANNY SINOPOLI, RECENT RENOVATOR

#### DON'T...

...roll your new refrigerator across your just-laid expensive wood flooring from Italy, cutting deep gouges into the boards. Before moving or installing appliances, set down protective rollout padding (available at any renovation supply store) to keep wood floors intact. Lesson learned.



Jenn-Air TriFecta dishwasher, from \$1,629 at Sears ([www.sears.ca](http://www.sears.ca)).

#### DO...

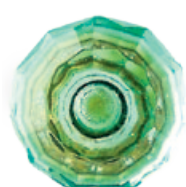
...replace that noisy old dishwasher you have with Jenn-Air's new TriFecta model, one of the sleekest – and quietest – on the market. After a day full of earsplitting drilling, sawing and hammering, that silence is golden.

### KNOBS THEY'LL KNOTICE

When Ludwig Mies van der Rohe proclaimed that God is in the details, he probably wasn't talking about drawer pulls. But many of this season's cabinet knobs are indeed divine – and just the finishing touches to jazz up blah cupboards.



Lee Valley's open-ring Hollywood handle is available in a pair of finishes: silvered black (shown above) and satin nickel. \$8.10 each through [www.leevalley.com](http://www.leevalley.com).



Anthropologie's aqua-coloured faceted-glass knob offers kaleidoscopic zing. \$6 each through [www.anthropologie.com](http://www.anthropologie.com).



IKEA's porcelain Lindsal knob boasts nickel-plated details. \$7.99 for a pack of two at IKEA ([www.ikea.ca](http://www.ikea.ca)).



Add floral flourish to kitchen cabinets with Anthropologie's ceramic bloom knob. \$8 each through [www.anthropologie.com](http://www.anthropologie.com).

## DESIGNER MUST-HAVE

For designer William MacDonald, the angular beauty of this handsome single-lever faucet from Blanco Canada is enough of a selling point, but the fact that its spout doubles as a hose makes it irresistible. "It sits on my countertop like a cool minimalist sculpture and the pullout feature is a huge plus," he says. It's available in stainless-steel (shown) or chrome finishes. \$886.37 at Home Depot ([www.homedepot.ca](http://www.homedepot.ca)).



# THE LOOK: GRAND HOTEL

Maybe its river-rock-and-bamboo-stalk fatigue. Maybe it's the plethora of luxury hotel projects, from the Ritz redo in Montreal to the new Shangri-La in Toronto, generating buzz in Canadian metropolises right now. Whatever the reason, the spa-like minimalism that has defined many a bathroom over the past few years is giving way to a richer, more ornate style suggestive of grand European hotels. "We are sooo done with the Zen bathroom," says design expert Janette Ewen, co-host with Ty Pennington of W Network's *Inside the Box* and ambassador for Quality Canadian Furniture, a network of homegrown furniture manufacturers. "People are ready, after a rough couple of years, for grander, less streamlined, more overtly traditional retreats," she adds, citing dark exotic woods and intricately veined marble, sumptuous patterned fabrics and mouldings on the walls. "I'm glamming up a Zen-like bathroom right now, bringing in a deep soaker tub and giving it a baroque feel over all. Three crystal chandeliers from Abraham's Antiques on [Toronto's] Queen Street West will illuminate the space. [The shop's owner] often reclaims hotel fixtures and furnishings." Think of the trend as a new way of puttin' on the Ritz.



## THE PALETTE

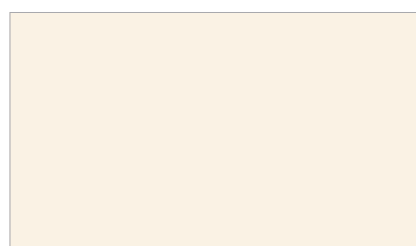
Bring the Old World to your new lav with this lush threesome from Para Paints.



Evoking both the blooms and clay bricks of an English rose garden, **Rosette Tint 3** (P2036-02) is elegant and warm.



For a moodier, more dramatic effect, try **Elderberry** (P2038-03) on all four walls or as a backdrop for a mirror.

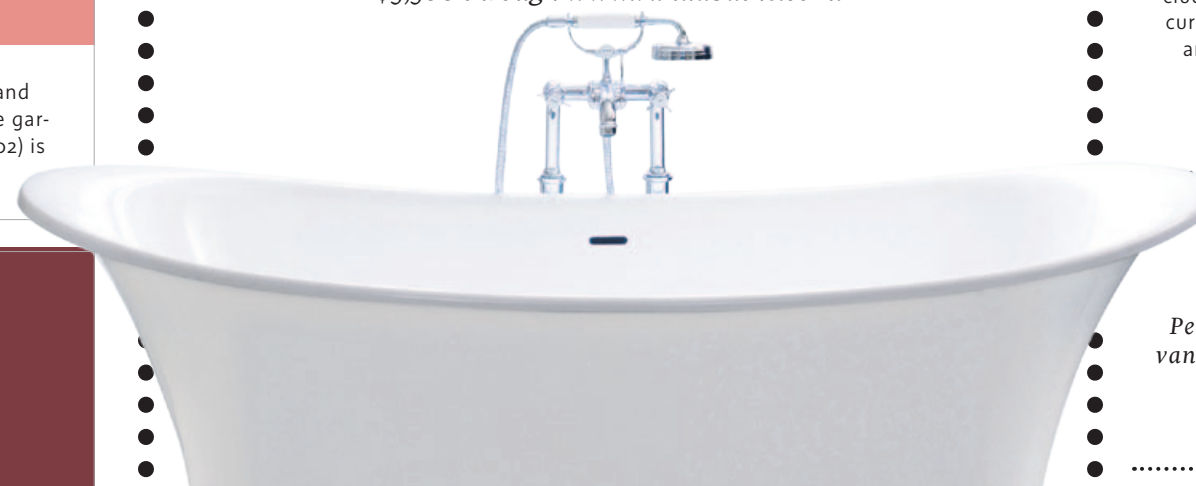


Bolder than white, **Orchid** (P5224-24) is, like the petals of its namesake, rich and velvety.

## DESIGNER MUST-HAVE

The name of the manufacturer may call a famous London museum to mind, but Victoria + Albert's new bateau-style Toulouse tub, which made its Canadian debut at the Interior Design Show in Toronto in January, is all French chateau or grand hotel. "I'm super inspired by [Parisian hotels like] Le Meurice and the Ritz," Janette Ewen says. But unlike the tubs in drafty European loos, the single-cast Toulouse isn't cold against the skin, as it's made of volcanic limestone, not old-fashioned enamel.

\$5,500 through [www.vandabaths.com](http://www.vandabaths.com).



### ADVENTURES IN RENOVATING

DOS AND DON'TS FROM STYLE EDITOR DANNY SINOPOLI, RECENT RENOVATOR

#### DON'T...

...skimp when it comes to toilet technology. It may be impolite to talk about, but a unit with dual-flush or other water-conserving features are worth the extra cost. Your water bill – and the environment – will benefit.



Kohler Flipside handshower, \$130 through [www.kohler.com](http://www.kohler.com).

#### DO...

...install a detachable hand shower if you have a big walk-in shower as I do. Besides being fun to use, it also makes cleaning large glass and wall surfaces a breeze.



This solid-poplar cabinet with walnut finish and white marble top includes a wealth of hidden storage space, including three inner drawers, a curling iron/hair dryer holder and a lined jewellery tray.

\$499 at Home Depot ([www.homedepot.ca](http://www.homedepot.ca)).



Made of solid-wood frames and wood-veneer components, Sears' Richview vanity features two doors, two drawers and decorative Queen Anne ogee bracket front feet.

\$799.99 at Sears ([www.sears.ca](http://www.sears.ca)).

### VANITIES FAIR

Pedestal sinks may be sleeker, but a luxe dark-wood vanity provides both a timeless look and extra storage space. All shown here are 36 inches wide.



Composed of knotty-pine solids and veneers, Kohler's heirloom-quality Thistle-down vanity boasts a catalyzed polyurethane finish and slow-close adjustable doors and drawers.

\$2,462.70 through [www.kohler.com](http://www.kohler.com).



Pottery Barn's single-sink Covelo console with thick Carrara-marble top is meticulously crafted of solid pine and pine veneer and finished by hand in a rustic amber stain.

\$1,699 plus shipping through [www.potterybarn.com](http://www.potterybarn.com).



Talk about the last word in green design: The shade atop this fixture's bubble-studded recycled-glass base is collaged with repurposed dictionary pages.

\$468 at Anthropologie ([www.anthropologie.com](http://www.anthropologie.com)).



The sturdy base of this Currey & Company Beam table lamp is made from solid repurposed wooden beams and the shade, out of putty-coloured burlap.

\$709.95 at Sescolite Creative Lighting ([www.sescolite.com](http://www.sescolite.com)).

## LEADING LIGHTS

*Illuminating in more ways than one, these eco-chic table lamps revealing how just how varied – and attractive – enviro-design can be.*



Part of its Architectural Salvage series, Pottery Barn's Square Urn Table Lamp is crafted by hand and then distressed. Other options in the series include Finial and Turned Wood lamps.

\$240 at Pottery Barn ([www.potterybarn.ca](http://www.potterybarn.ca)).



Created by Jane Gray for Stray Dog Designs, the Clare lamp's base is made of hand-blown recycled glass, as are its finials. The shades are hand-painted sheets of tin.

\$325 through [www.straydogdesigns.com](http://www.straydogdesigns.com).

# THE LOOK: SALVAGE CHIC

As the trend toward ornate bathrooms suggests, any note of ostentation is largely confined these days to private or intimate spaces (and even then it's mostly a surface extravagance tempered by the use of sustainable materials and energy-conserving technologies). In higher-traffic living areas where socializing and entertaining take place, an earthier, more lived-in look prevails, as illustrated by this chicly unpretentious room in an eco-friendly house by Toronto's Levitt Goodman Architects. "Anything reclaimed, rustic or vintage is all the rage in our living spaces," interior designer Karen Sealy of Sealy Design Inc. says. "I'm loving the second-life rug I purchased recently; it's an area rug made from patches of much older, often damaged rugs that have been sewn together in a patchwork fashion and then vat-dyed in a more current colour to create a vintage piece with a fashion-forward feel." Other popular accents, Sealy says, include old globes and trophies, antique maps or nautical charts, distressed-leather items such as old baseball gloves and anything else that seems to have a story to tell." In other words, history with a modern twist is today's decorative rallying cry.



Living

COURTESY OF BEN RAHN/A-FRAME ([WWW.AFRAMESTUDIO.COM](http://WWW.AFRAMESTUDIO.COM)) AND LEVITT GOODMAN ARCHITECTS ([WWW.LEVITGOODMANARCHITECTS.COM](http://WWW.LEVITGOODMANARCHITECTS.COM))

## ADVENTURES IN RENOVATING

DOS AND DON'TS FROM STYLE EDITOR DANNY SINOPOLI, RECENT RENOVATOR

### DON'T...

...buy a sofa with tufting on the seat. Although I love the vintage look of my new 1960s-style couch, at least three of the buttons on the long tufted seat cushion have popped off already. Get me to an upholsterer.



Parker coffee table, \$1,040 at Barrymore ([www.barrymorefurniture.com](http://www.barrymorefurniture.com)).

### DO...

...invest in a beautiful reclaimed-wood table designed by Tom Bina. The lumber for the tables – peroba wood salvaged from derelict houses and barns in the Brazilian state of Paraná – is typically 70 to 100 years old, giving each piece a unique weathered look.

## DESIGNER MUST-HAVE

A number of North American studios, from Propellor Design in Vancouver to Uhuru in New York, specialize in the kind of salvage chic spotlighted by Karen Sealy. This sculptural chaise longue, called Back to the Drafting Board, is by Toronto's Brothers Dressler, whose design ethos is founded on sustainable practices. The chair's rotating adjustment hardware, for instance, was salvaged from an old drafting board. It was also constructed so that, at the end of its life cycle, its components can be disassembled for re-use or recycling.

Made to order through [www.brothersdressler.com](http://www.brothersdressler.com).



## THE PALETTE

Get down to earth with these complementary colour picks from Benjamin Moore.

For an appealingly organic-looking accent colour, you can't go wrong with **Spring Moss** (2027-20).

Less green than grey **Guilford Green** (HC-116) can be a handsome hue for statement walls, furniture and floors.

Don't be fooled by the name: **Timid White** (2148-60) is a more than robust anchor shade.