

hospitality design

september 2014 hospitalitydesign.com

learning curve

a look at education today

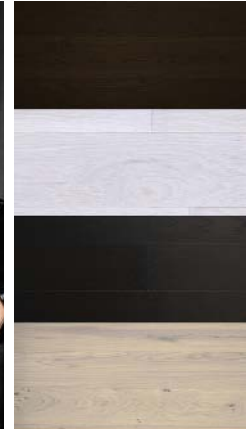
HD Americas issue
a hospitality design event

designs you love, quality you deserve,
delivery you expect, in stock!



lenny kravitz

Founder
Kravitz Design



1 People know you as a musician and an actor, but how did you end up in hospitality and product design?

I often found myself having a hard time finding the exact thing that I was looking for, which led me to create custom pieces. Working in hospitality allows me to create things that I can use in my projects and that I feel would appeal to others.

2 What hospitality design projects are you currently working on?

A nightclub and villa at the Baha Mar in Nassau, Bahamas; suites at the SLS Las Vegas; a specialty floor at Bisha Hotel & Residences in Toronto; and another nightclub in Paris.

3 You're rather prolific on the product design side. What product collections are in your portfolio?

We have worked on furniture with Kartell, lighting with Swarovski, wallpaper with Flavor Paper, and tile with Lea Ceramiche. Currently, we are working on a collection with Rocky Mountain Hardware. Quality and the desire to produce unique products are what draw me to any collaboration.

4 You recently collaborated with BR-111, a hardwood flooring company. What drew you to them?

BR-111 is an innovative company that's looking to bring the highest quality product to the market. This aligns exactly with my philosophy. We were looking at a BR-111 product for a project of ours and asked if they could produce something that wasn't in their line—that led to the collaboration [pictured].

5 What does the collection offer?

Eight unique finishes that range from a very light, almost white oak, and moves through the spectrum to black. The collection was inspired by the architecture of Scandinavia and Japan. I wanted it to have a classic but modern feel.

projects marco island marriott beach resort

view



1. The Marriott Marco Island's presidential suite features an expansive 3,000-square-foot terrace with a hot tub and various lounge seating.

from the top

**Balinese flair for a
presidential suite in Florida**

By JOANN GRECO

Photography by MORIS MORENO PHOTOGRAPHY



2



3



Over the decades, various designers have tweaked the Marriott Marco Island here, added and deleted there. In recent years, the baton has been handed to Coral Gables-based Edge of Architecture (EoA), which expanded the Florida property's meeting and event spaces, as well as crafted rooftop restaurants and a third pool.

As the resort looks to renovate its guestrooms, EoA has developed a different approach, starting at the top with a showcase 1,800-square-foot presidential suite. "I dug into the roots of the resort," says EoA founder Malcolm Berg, "and came to understand that the original designers saw it as an island within an island: a self-referential property with a Balinese spin. Instead of adding one more layer, I stripped away everything and returned to that notion.

"The presidential suite will be a baseline as far as quality and overall design direction goes for the rest of the guestrooms," he points out. Still, it features more than a few extra touches: a handcarved elephant, a water wall that's covered in mirrored mosaic and graced with a traditional wooden Balinese figure, polished limestone floors, a dining room that's capped with a hammered copper ceiling and sealed off by gauzy curtains, an ipe-clad feature wall, and a bathroom adorned with a mosaic wall and rich timber touches that are a nod to Indonesia. "It's a luxurious take on a modern Balinese aesthetic," says Berg.



4



5

The previous presidential suite sat in the same footprint, but in addition to the design update, Berg shifted and fine-tuned the layout. "Very often these suites feel way too large," he observes, "so with this one, we broke down the spaces into discrete introvert and extrovert personalities."

The lone bedroom is "womblike," he says, and adjoins a cozy reading nook and writing desk where a deep curved sofa is built into a platform that hugs an undulating wall. On the other side of that wall, the public space sprawls, beginning with the dining and boardroom, and extending to a living area

2. The suite's living room features detailed touches such as a crushed shell mosaic coffee table and wooden alligator bench.

3. A curved platform sofa, elephant figurine, rich timbers, and polished limestone floors in the bedroom reference a Balinese aesthetic.

4. The dining area is set off from the other public areas by a gauzy curtain.

5. In the bedroom, a round leaf-patterned area rug evokes the local sea grape.



highlighted by quirky accents like a coffee table made from crushed shell mosaic and a sculptural bench carved in the form of an alligator. Wrapping around the entire suite is a 3,000-square-foot oceanview terrace with a bar, firepit, hot tub, and additional lounge seating, including a teak Balinese swing.

To marry those elements with the lush Florida setting, EoA adorned the space with celadon-hued textiles such as the silk and wool hand-tufted area rugs patterned with a round leaf that evokes the flora of the sea grape, a local, protected species. "Throughout, there's an emphasis on merging the indoors and outdoors," says Berg. "Instead of responding to trends, that's a sensibility that remains cohesive and timeless." hd

eoa-inc.com; marcoislandmarriott.com



6. The wraparound outdoor terrace also features a firepit.

7. A celadon wall in the shower set behind a standalone tub exemplifies the indoor-outdoor vibe of the suite.

Presidential Suite at the Marco Island Marriott Beach Resort Florida

Owner

Cornerstone Real Estate Advisers

Management Company

Marriott International

Architecture and Interior Design Firm

EoA, Coral Gables, Florida

Architecture Project Team

Malcolm Berg, Viviane Savornin, Pablo Diaz, and Ross Downing

Interior Design Project Team

Malcolm Berg and Leslie Schultz

Project Manager

John Hardy Group

Contractor

Heritage Builders

Purchasing Firm

Summit Procurement Services

Consultants

Bluworld

Engineering

Bob Rude Structures and Jenkins Maag Associates

DINING AND CONFERENCE ROOMS

Art

South Seas Trading Company

Furniture

Saccaro USA

Millwork

Diversified Building Concepts

Textiles

Bart Halpern and Jeffrey Michaels

Lighting

Illumination Lighting and Arteriors Contract

Tile

Tile & Marble Collection

LIVING ROOM

Art

South Seas Trading Company

Furniture

Saccaro USA, Bright Chair, and Adriana Hoyos

Textiles

Brentano Fabrics, Donghia, Architex, Sahco, and Maharam

Flooring

Bay Harbor Rug Gallery

Accessories

Remanufacturing & Design Group

Tile

Tile & Marble Collection

Drapery Controllers

Somfy

BATHROOM

Bathtub

Victoria + Albert

Tile

Casa Cielo Tile & Mosaic

Fixtures

Kohler

STUDY

Textiles

Bart Halpern, Jeffrey Michaels, Clarke & Clarke, and Architex

Upholstery

Remanufacturing & Design Group

Art

South Seas Trading Company

Millwork

Diversified Building Concepts

Outdoor Seating

Neoteric Luxury

GUESTROOM

Bench

South Seas Trading Company

Millwork

Diversified Building Concepts

Textiles

Clarke & Clarke, Arc-Com Fabrics, and Architex

Upholstery

Remanufacturing & Design Group

Flooring

Bay Harbor Rug Gallery

ROOFTOP TERRACE

Outdoor Seating

Skyline Design, JANUS et Cie, and Neoteric Luxury