

6/11

The leading business, design
and product resource for
the kitchen & bath trade

www.kitchenbathdesign.com

Kitchen & Bath design news

Slow Growth

Kitchen & bath dealers are seeing improved business conditions, according to a new *KBDN* survey

COVER STORY:

Marketing Bolsters
Award-Winning Firm

Kitchen Cabinet
Trends Focus on
Value, Simplicity

KBIS Wrap-Up
Spotlights Hot
Products for 2011

New Products



Kitchen Sink Offers Added Space

The D759 Undermount Sink from Ukinox is sized at 30-1/2"x18-1/2"x9", allowing it to accommodate most large-sized pots and pans. The sink, which features a high-polish European finish, includes basket strainers, mounting hardware and a countertop template.

www.uksalesllc.com

Circle No. 200 on Product Card

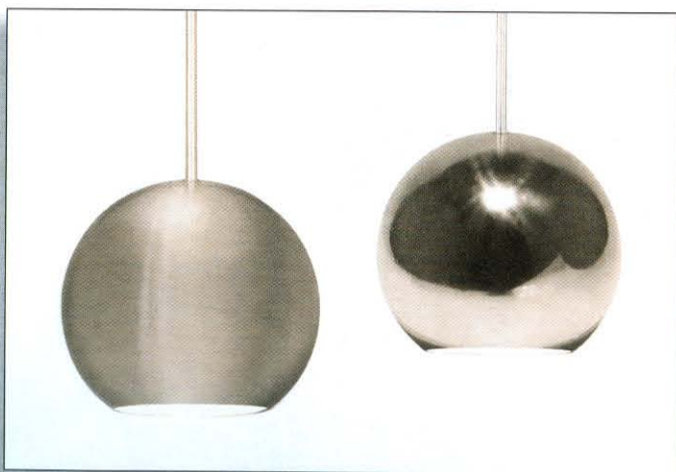
Industrial Design Kitchen Adds Carbon Fiber Cabinet

Poggenpohl has given its Porsche Design kitchen p'7340 a new look with a carbon fiber cabinet front. Familiar from motor racing, the carbon fiber composite is ultra-light, strong and temperature resistant.

For the carbon fiber front of the kitchen, the material is laminated and applied to a glass front, which underscores the carbon fiber's three-dimensional appearance.

www.poggenpohl.com

Circle No. 201 on Product Card



Pendants Sport Metal Shades

The Stadt Quick Connect Pendants from WAC Lighting are crafted of spun metal and feature a design rooted in the minimalist look. The spun metal spherical shades on the pendant lights are offered in brushed nickel and chrome finishes. The pendants are 4.25" tall and 4.5" wide.

www.waclighting.com

Circle No. 202 on Product Card

Kitchen Faucet Fashioned From Stainless Steel

The Eternity 070 Solid Stainless Steel Faucet from Water, Inc. is a cold-only filter faucet that comes equipped with a built-in aerator. In addition, the swivel faucet features an adjustable quarter-turn ceramic disc flow control valve. It is certified to NSF/ANSI Standard 61 and California Proposition 65, as well as meets the no lead standards for CA AB 1953.

www.waterinc.com

Circle No. 204 on Product Card



Software Suite Is Available for Rent

KCD Software is now offering its entire Cabinet/Closet Software Suite as a rental. The complete program of Cabinet/Closet Designer includes the latest features, such as Custom Library Creator, which allows designers to save whole components such as shelving units, islands and even whole kitchens right into their menu for dropping in and modifying at a later date.

www.KCDSoftware.com

Circle No. 203 on Product Card

The Designer's Choice[™]

"Creations"[®]
by ALNO, INC.

MADE WITH SWAROVSKI ELEMENTS

Fine Decorative Hardware, Bathroom Accessories, Mirrors, and Mirror Cabinets
Phone: (818) 882-6028 www.alnoinc.com
© copyright ALNO Incorporated, 2011. All Rights Reserved
MADE WITH SWAROVSKI® ELEMENTS. SWAROVSKI® is a registered trademark.

Circle No. 50 on Product Card



Closet Cabinet Systems

Wellborn Cabinet has expanded its offerings with the new Distinctive Closets program, which provides elements needed to create storage systems for mudrooms, media centers, laundry rooms, bedrooms and other areas. Cabinet items are available in a variety of thermofoil, laminate, cherry and maple finishes, and species include solid cherry, maple and MDF.

Circle No. 253 on Product Card



Colorful Hardware

The Indochine collection of knobs and pulls from **Atlas Homewares** feature bold colors contrasting on a black background. Available in Blue, Mandarin Orange, Red Apple and Lime Green, the line includes cone knobs, round knobs and pulls.

Circle No. 252 on Product Card



Traditional Bath Faucets

Faucets in the Weymouth bath collection from **Moen** are traditionally styled, with elaborate details such as porcelain inlays with decorative Hot and Cold script in English or French on the handles, and a generously sized spout with distinctive curves. A variety of design options – from two-handle widespread with cross handles to single-handle lever styles – are available. Finishes include Chrome, LifeShine Brushed Nickel and Oil Rubbed Bronze.

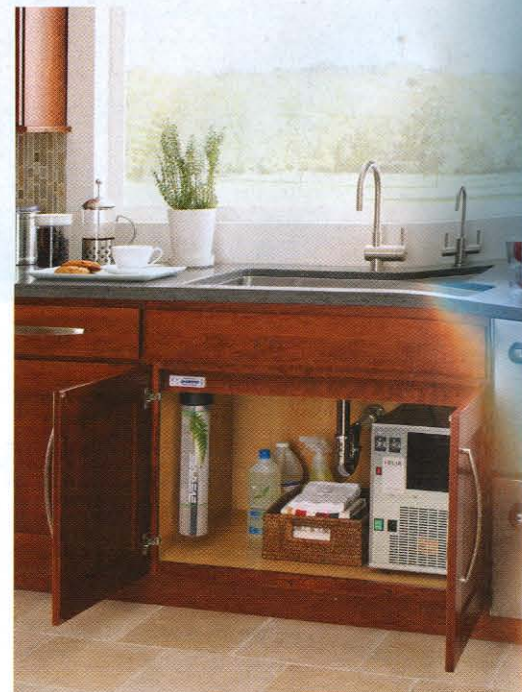
Circle No. 256 on Product Card



Laminate Countertops

The expansion of the 180fx series of laminate countertops by **Formica Corp.** adds seven distinctive natural stone slab and petrified wood options to the line. Created with an advanced printing technology that is combined with premium finishes including Honed and Etchings, the line now includes Petrified Wood, shown.

Circle No. 254 on Product Card



Hot/Cold Water Dispenser

Everpure has launched its upgraded Helia Instant Hot & Chilled Water Dispenser with an enhanced frame and greater capacity to produce more cold water. Originally launched in 2008, Helia merges two separate units – the Solaria Instant Hot Water Dispenser and Polaria Instant Chilled Water Dispenser – into one system. The unit features customizable temperature controls, and can now produce 30 liters per hour of cold water.

Circle No. 255 on Product Card



Refrigerator Drawers

The True Professional Series Undercounter Refrigerator Drawers from **True Refrigeration** feature True-glide self-closing technology that enables the drawers to smoothly and quietly close with a light touch. At 24" wide, the drawers add 5.6 cubic feet of refrigerated space, and the refrigeration system combines cooling, humidity control and quiet operation. They are available in stainless steel and a panel-ready option.

Circle No. 257 on Product Card