

# WH<sup>the</sup>OLESALE

News of Plumbing, Heating, Cooling and Industrial PVF

OCTOBER  
2014

VOL 69,  
NO. 10



*The executives at Mountainland Supply have set the standard for a culture that focuses on community rather than individuality. In doing so, they've created an extraordinary environment of selflessness, hard work, loyalty and trust. Shown here, at "This is the Place" monument overlooking Salt Lake City, are (front row) James Calvert, Brian Haskell, Brent Anderson, Ben Mecham and Pete Pletsch; and (back row) Chris McGarry, Danny Muhlestein, Mike Edwards and Tim White. A comprehensive interview with the Mountainland leadership begins on page 88.*

## Liberty pumped about building expansion

**BERGEN, N.Y.** — Liberty Pumps has broken ground on a major building expansion that will add an additional 81,000 square feet to its manufacturing and warehouse space, as well as another 8,000 square feet to its product research and development area.

Since its last expansion in 2008, Liberty has more than doubled its sales.

"This expansion will provide needed space for additional manufacturing cells along with supporting inventory, while improving workflow and productivity. We want to make sure that as we grow, we continue to provide a high level of service to our customers," said Randall

Waldron, Vice President of Sales and Marketing. "Expansion to the R & D facilities will support development of new product lines and improve the product time to market."

The project also includes several pieces of new manufacturing equipment intended to improve efficiencies and further support the company's "source and build in the U.S." initiatives. Construction is expected to be completed by February 2015.

Visit [www.libertypumps.com](http://www.libertypumps.com)



**FIND US**  
[twitter.com/wholesalermag](https://twitter.com/wholesalermag)  
[facebook.com/wholesalermag](https://facebook.com/wholesalermag)

# PRODUCT NEWS

## Linear drains

Sleek, low-profile linear drains produced exclusively with 100% stainless steel fit in quite nicely with the strong range of top-quality products. Manufactured using



architectural-grade stainless steel to produce decorative, tile insert and pattern grid styles for modern design custom showers. Stylish, durable shower drains suitable for any residential or commercial project. Specified to create curbless, barrier-free ADA-compliant custom showers with style, the drains are ideal for any large-scale hospitality or health-care setting. **LUXE**

[www.lineardrains.com](http://www.lineardrains.com)

## Curved shower rod

Curved shape of the Tension Curved Shower Rod provides up to 5 1/2" of additional shower space



and installs in 3 easy steps. Stylish covers help to conceal mounting hardware with no tools, assembly or drilling required. Available in chrome,

brushed nickel and oil rubbed bronze finishes. Adjusts from 57" to 60". Made from corrosion-resistant stainless steel. Fits standard shower curtains and rings and comes with a limited lifetime warranty. **MOEN®**

[www.moen.com](http://www.moen.com)

## Circulator + tankless

A circulating pump inside this tankless unit keeps hot water close to the outlet, minimizing the wait and waste of unused potable water and energy used to heat the water. Using the integral digital display, homeowners can program the recirculator to operate only when needed, with a precision down to an hour. Or, an "auto" setting allows the system to quickly "learn" a household's



water-usage routines and automatically control the recirculation loop activation times. **NORITZ**

[www.noritz.com](http://www.noritz.com)

## Industry-first ducted vertical stack heat pump unit

Tranquility® is the first ducted heat-pump unit stack product on the market. Provides a simple, cost-effective approach to installing ducted stacked units, this series also provides independent metering capabilities for many building applications including office, education, hospitality and multi-family projects. Available in 3/4- to 3-ton capacities, it features top supply air discharge openings that allow for easy configuration. Engineered for installation behind drywall, with virtually seamless integration into a room and only the unit's supply and return grills exposed, its vertical, space-saving design



further streamlines installation to promote labor cost savings. **CLIMATEMASTER**.

[www.climatemaster.com](http://www.climatemaster.com)

## Comfortable toilet

The Karo toilet offers exceptional comfort and performance, including a chair-height bowl with elongated dimensions; a premium soft-close lid and super-quiet flush mechanism. Featuring high flushing technology, this toilet is EPA WaterSense-compliant, using only 1.28 gpf and capable of clearing over 1,000 grams of solid waste in independent MaP testing. With an oversize 2 1/8" trapway, clogging is virtually eliminated, while precision rim jets and a non-staining, anti-microbial finish make for an easy-to-maintain bowl. **ICERA**.

[www.icerausa.com](http://www.icerausa.com)



## Dual-installation tankless

The redesigned Ultra Series tankless water heater allows for concentric venting or twin-pipe PVC installations, all in one unit. Installers simply remove and discard the exhaust and adapter ring for concentric venting; likewise, the intake cap is removed and discarded for twin-pipe PVC configurations. **RINNAI**.

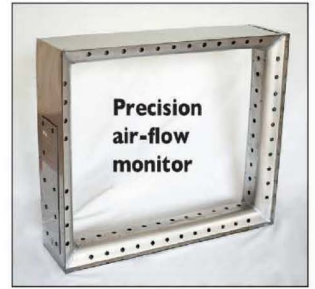
[www.rinnai.us](http://www.rinnai.us)



## Kitchen/bar faucet collection

The Bollero collection, specific to the kitchen and bar, incorporates unique lines, a swivel spout and pull-down spray head. The Bollero faucet is available in olive bronze (GRAFF exclusive finish), polished chrome, brushed nickel and polished nickel, and is a water-efficient collection offering a reduced flow of 1.8 gpm. **GRAFF**.

[www.graff-faucets.com](http://www.graff-faucets.com)



**Precision air-flow monitor**

Integrating thin-film resistor sensing and patented air-sampling technology, the Precision Air Flow Monitoring Station features an "air foil" and multiple precision-formed air passages integrated into a stainless-steel assembly. Built to order, the structure's engineered hole pattern can maintain its measuring accuracy even with 50% hole blockage. Fits into existing ductwork — no duct removal required. **NJK PRECISION**.

[www.njkprecision.com](http://www.njkprecision.com)

## Freezeless faucets

Models 22 and V22 freezeless hot and cold faucets allow homeowners to have hot and cold water outside. These faucets are an easy upgrade, allowing homeowners plenty of versatility. Both faucets are maintenance free and include a patented pressure relief valve that prevents the faucet tubes from bursting in freezing conditions, even with a hose attached. Also be mounted inside the garage using the PC/ABS drywall mounting plate. **WOODFORD MFG. CO.**

[www.woodfordmfg.com](http://www.woodfordmfg.com)



## Ratchet cutter for plastic pipe

The Piraña II cutter is a one-handed operation, 2" PVC ratchet cutter with a high-quality, replaceable SK5 carbon steel blade. Heavy-duty spring loaded retractable blade



quickly and easily makes a clean straight cut on PVC, CPVC, ABS, and HDPE pipe and tubing through 2" diameter. Heavy duty steel construction, but also has a lightweight compact design. Replacement blades and springs are also available. **J.C. WHITLAM**.

[www.jcwhitlam.com](http://www.jcwhitlam.com)

# PRODUCT NEWS

## Steam shower technology

The sleek MicroTouch control works in the same manner as a smartphone or tablet: with just the



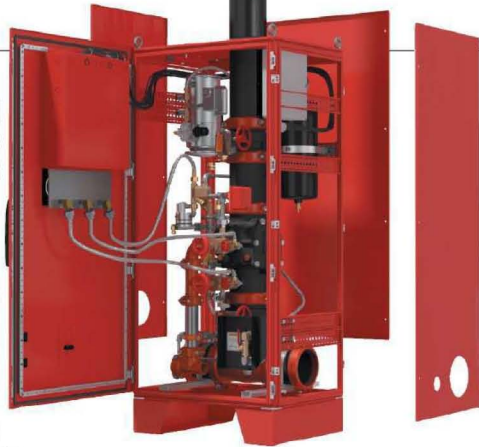
touch of your finger, you control the screen. Using capacitive touch technology (CTT), users can easily control their steam shower experience, including; on/off, temperature, PowerFlush system, or recall their last steam setting. Designed with a low profile, crisp and clear screen display, and an impressive high-end visual appeal. **THERMASOL.**

[www.thermasol.com](http://www.thermasol.com)

## Improved fire protection

Improvements to the Fire-Lock® Series 745 Fire-Pac pre-assembled fire protection valve and trim relocates the electrical connection box from atop the cabinet to a location inside the cabinet, creating a lower profile and allowing the 6'5" cabinet to fit through standard doorways for ease of delivery and installation. Also, new insulation and heating components allow operation in ambient temperatures as low as 20°F. Fire-Pac is pre-wired to a fire alarm control panel or junction box and enclosed inside a metal cabinet. The improvements give customers more options and benefits for installation, maintenance and design. Weatherproofed to an equivalent of NEMA 4 standards to keep out moisture and dirt. **VICTAULIC.**

[www.victaulic.com](http://www.victaulic.com)



Circular basin

The Maru 42 basin has a diameter of 16<sup>5</sup>/<sub>8</sub>" and is 7" high, and retails from \$650. ("Maru" is Japanese for "circle.") It's available from all official dealers nationwide. This unique construction is finished by hand to provide a glossy white surface that is highly durable and easy to clean. The basin is crafted of a proprietary material known as ENGLISHCAST® which is comprised of finely ground Volcanic Limestone™ mixed with resin and cast in one seamless piece. **VICTORIA + ALBERT.**

[www.vandabaths.com](http://www.vandabaths.com)



## HAVING PROBLEMS SOLDERING LEAD FREE FITTINGS?

### SOLDERING LEAD FREE FITTINGS IS 'NO SWEAT' WITH 'EVERFLUX'

In repeated comparison tests EVERFLUX came out as the No 1 plumbing flux for use with lead free fittings.

The high heat threshold means the flux won't burn off before the solder has melted.

The all weather paste makes it suitable for hot and cold climates. Everflux's proven formulation meets ASTM B813 "Water Soluble" and is Certified Lead Free-NSF ANNEX "G"

### IT'S FAST IT MEETS THE CODES IT WORKS



FOR WHOLESALE INQUIRES CONTACT - DELTA Q Inc. Tel. 714-879-0622 [sales@EverfluxUSA.com](mailto:sales@EverfluxUSA.com)